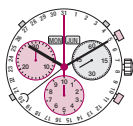


Cal. 5040.F



Battery type: 395 (diameter 9.5mm x 2.6mm / SR 927 SW)
Accuracy: +20 / -10 seconds per month

English User's Manual

In case your watch needs to be repaired or to raise claims under a guarantee, please contact the point of sales



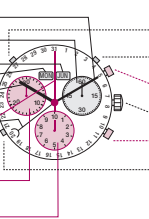
Description of the display and control buttons

Display elements

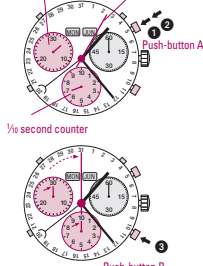
- Minute hand
- Second hand
- Month
- Day of week
- Hour hand
- Date
- Centre stop-second
- Minute counter
- 1/2 second counter (hour counter after 30 minutes)

Control buttons

- Corrector D (day)
- Corrector E (month)
- Push button A
- Crown
- Push button B
- Corrector C (date)



Minute counter Second counter

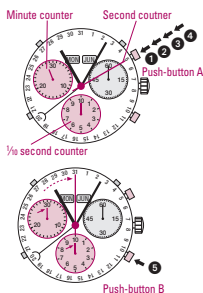


Chronograph: Basic function

(Start / Stop / Reset)

Example:

- Start:** Press push-button A.
- Stop:** to stop the timing, press push-button A once more and read the 3 chronograph counters:
4 min / 5 sek / 7/8 sec
- Zero positioning:** Press push-button B. (The 3 chronograph hands will be reset to their zero positions).



Chronograph: Accumulated timing

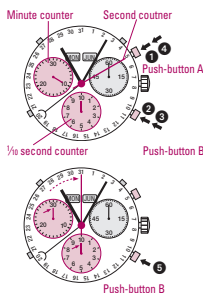
Example:

- Start:** (start timing)
- Stop:** (e.g. 15 min 5 sec following 1)
- Restart:** (timing is resumed)
- Stop:** (e.g. 13 min 5 sec following 3)
= 28 min 10 sec.
(The accumulated measured time is shown)

- Reset:** The 3 chronograph hands are returned to their zero positions.

Please note:

- Following 4, the accumulation of the timing can be continued by pressing push-button A (Restart / Stop, Restart / Stop, ...)



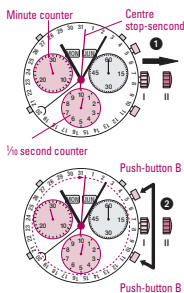
Chronograph: Intermediate or interval timing

Example:

- Start:** (start timing)
- Display interval:** e.g. 10 minutes 10 seconds (timing continues in the background)
- Making up the measured time:** (the 3 chronograph hands are quickly advanced to the ongoing measured time).
- Stop:** (Final time is displayed)
- Reset:** The 3 chronograph displays are returned to their zero position

Please note:

- Following 2, further intervals or intermediates can be displayed by pressing push-button B (display interval / make up measured time, ...)



Adjusting the chronograph hands to zero position

Example:

One or several chronograph hands are not in their correct zero positions and have to be adjusted (e.g. following a battery change).

- Pull out the crown to position II (all 3 chronograph hands are in their correct or incorrect zero position).
- Keep push-buttons A and B depressed simultaneously for at least 2 seconds (the centre stop-second rotates by 360° → corrective mode is activated).



Adjusting the centre stop second

- Single step: A 1 x short
- Continuous: A long

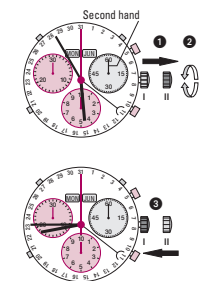
Adjusting the next hand B

- Adjusting the 1/2 second counter hand (position 6h)
- Single step: A 1 x short
- Continuous: A long

Adjusting the next hand B

- Adjusting the minute counter (position 9h)
- Single step: A 1 x short
- Continuous: A long

- Returning the crown to position I
Termination of the chronograph hands adjustment (can be carried out at any time).

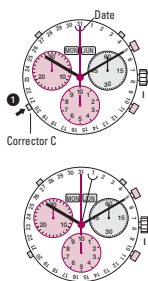


Setting the time

- * Pull out the crown to position II (the watch stops).
- Turn the crown until you reach the correct time 8.45.
- * Push the crown back into position I.

Please note:

- In order to set the time to the exact second, 1 must be pulled out when the second hand is in position «00» (I). Once the hour and minute hands have been set, 2 must be pushed back into position I at the exact second.



Setting the date (quick mode)

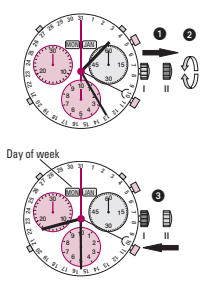
Example after a change of month:

- Date on watch: 31
- Current date: 1

- Press the corrector C once to adjust the date 1 day forward.

Please note

- The date for the following day must be set during the date changing phase between 9:00 PM and 00:20 AM.



Setting the time, date, day of week and month

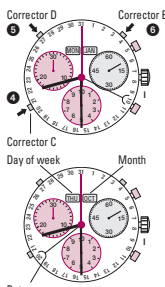
Example:

- On the watch: 10:00 (AM) / 1:25 AM
- Current: 20 (FRI) / 08:30 PM

- * Pull out the crown to position II (the watch stops).
- ** Turn crown until the current time is shown.
- * Push crown to position I (watch continues to run).

Please note

- * To set your watch to the exact second please refer to the chapter entitled «Setting the time»
- ** Please observe the AM/PM clock rhythm



- Press the corrector C to gradually advance the date hand.

- Press the corrector D to gradually advance the day of week.

- Press the corrector E to gradually advance the month.