

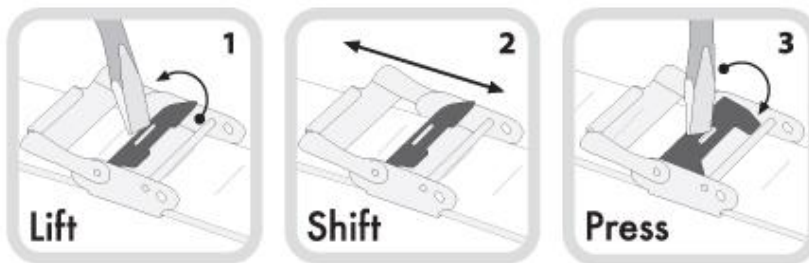
**STÜHRLING**  
ORIGINAL



*Respect for the Art and Tradition  
of the Swiss Watchmaking Legend*

### Watch Band Adjustment:

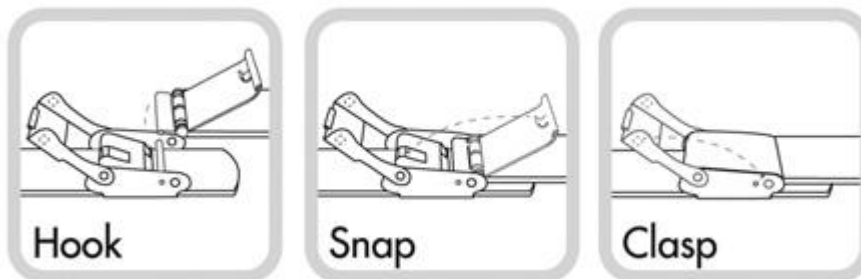
#### Mesh Bracelets:



**Adjusting the Clasp** - Mesh bands are easily adjustable in just three simple steps:

#### **LIFT - SHIFT - PRESS**

**LIFT:** place a small tool (flathead screwdriver or adjustment tool) in the slot on the clasp. Lift the bar in the direction facing away from the straight pin (place the tool so the handle is in the direction of the case of the watch). Leveraging the tool against the straight pin may result in the straight pin bending. **SHIFT:** the adjustable buckle to the desired position (make sure the clasp is set in one of the indentations on the back of the band). **PRESS:** press the slotted clasp closed – not using the straight pin as leverage to protect against bending.



**Securing the Clasp** - Mesh clasps are easily secured in three easy steps:

**HOOK - SNAP - CLASP** Pull the *Hook* over the pin, *Snap* the flat clasp closed, then close the security *Clasp*

